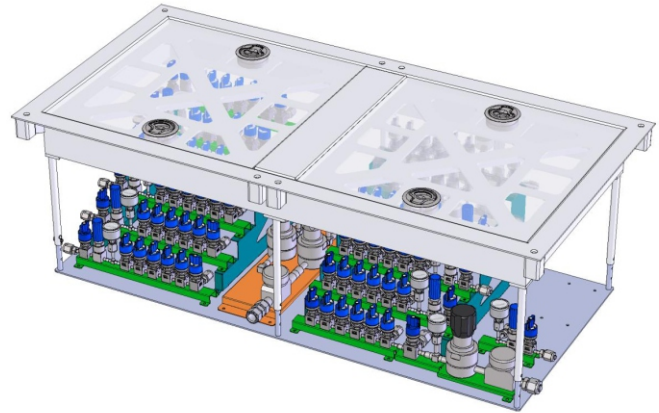


FM2 Series Floor Module

Inert Gas Hook-Up



Features

- ▶ Replaces standard raised floor tiles.
- ▶ Available with telescopic frame or full containment enclosure.
- ▶ Superior maintenance access.
- ▶ Modular stick design.
- ▶ Reduces on-site cost, labor, and risk.

Technical Data

Material:

Carbon Steel

Finish:

Powder Coat

Color:

White standard, color match available (on request)

Load Rating:

1000 lb. Point Load (LG lid option)

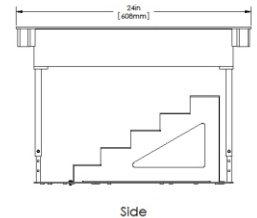
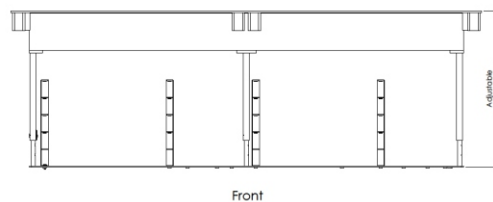
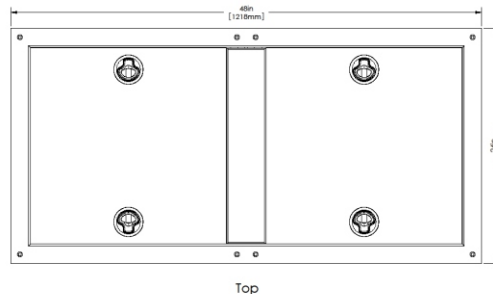
Ordering Information

FM2T-LG-2.0

- Raised Floor Height (in.)
- Lid Type
 - LG - Layered Composite (1 Piece, Clear)
 - AC - Lexan w/Support (2 Piece)
- Series Type
 - FM2T - Telescopic
 - FM2E - Enclosure

Dimensions

Patent Number US 7,039,999 B2



Note Product availability and specifications contained herein are subject to change without notice. Consult factory for potential revisions.



DFS Diversified Fluid Solutions
A Critical Process Systems Group Company

11789 W. Executive Drive
Boise, Idaho 83713
P: +1 208.489.0053
Web: www.dfsolution.com
Email: info@dfsolution.com