

Features

- ▶ Dual cylinder isolated gas cabinet.
- ▶ Integrated controller.
- ▶ Wall mount construction.
- ▶ Semi S6 certified.

Technical Data

Material:

Carbon Steel

Finish:

Powder Coat

Color:

White standard, color match available (on request)

Cylinders Type:

Nominal size 6" OD x 19" H

Ordering Information

MGE-C350-B-C350-C-C580

Purge Gas Type (CGA/DISS #)

C580 - Example Argon CGA 580

Right Process Gauge Range

A - 30-0-30 psig Compound

B - 30-0-60 psig Compound

C - 30-0-100 psig Compound

D - 30-0-160 psig Compound

E - 30-0-300 psig Compound

F - 0-1500 psig

G - 0-3000 psig

Right Process Gas (CGA/DISS #)

C350 - Example Hydrogen CGA 350

D728 - Example Chlorine CGA/DISS 728

Left Process Gauge Range

A - 30-0-30 psig Compound

B - 30-0-60 psig Compound

C - 30-0-100 psig Compound

D - 30-0-160 psig Compound

E - 30-0-300 psig Compound

F - 0-1500 psig

G - 0-3000 psig

Left Process Gas (CGA/DISS #)

C350 - Example Hydrogen CGA 350

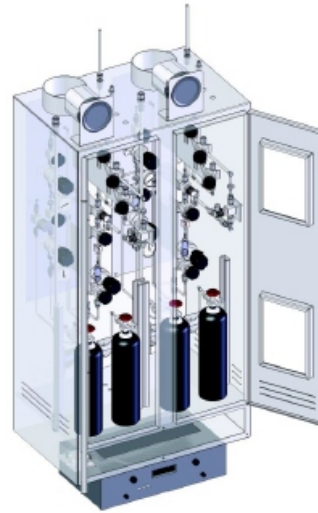
D728 - Example Chlorine CGA/DISS 728

Series Type

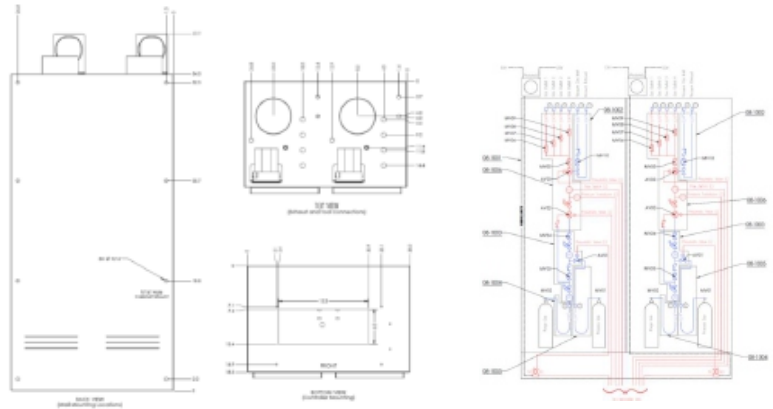
MGE - Multi Gas Enclosure

MGE Series

Single or Dual Cylinder Gas Cabinet



Dimensions



Facility Requirements

	Service Type	Size/Type	Flowrate/Pressure	Electrical/Control	Comments
1	N2 (Vacuum Gen.) Inlet	3/8" HVCR	120 SLPM @ 80 psig	N/A	
2	Exhaust	6" Duct Collar	175 CFM	N/A	
3	Photohelic Pressure Gauge	1/8" Female NPT	0-1 in. W.C.	MAX Rating 10A @ 28VDC	LP Port to Exhaust
4	Process Gas Tool Connection	1/2"x1/4" Coax (x4)	N/A	N/A	
5	Water Sprinkler	1/2" NPT	N/A	N/A	
6	Power	N/A	N/A	5A @ 120VAC	One (1) per MGE

Note Product availability and specifications contained herein are subject to change without notice. Consult factory for potential revisions.



11789 W. Executive Drive
Boise, Idaho 83713
P: +1 208.489.0053
Web: www.dfsolution.com
Email: info@dfsolution.com