

## Features

- ▶ Pulled ports for smooth hydraulic transition.
- ▶ Dense pack ports for tight service installations.
- ▶ Available in header only or valved configurations.
- ▶ Headers burst tested to 4,600 psig (2" dia.).

## Technical Data

### Material:

304 or 316 Stainless Steel

### Finish:

X

### Color:

X

## Ordering Information

PH304-HNR-5EAB-C- -

### Options

SC1 - CFOS

SC2 - Passivated

Q - Material Trace Documents

### Port Spacing (in.)

Specify port spacing if different than standard, see dimension drawing

### Valve Type

Blank - No Valves

C - Compression End, Ball

N - NPT (F), Ball

P - ProPress®, Ball

S - Sanitary, Ball

SD - Sanitary, Diaphragm

### Header Qty, Size, Orientation

Size      Orientation

C-1/2"      A - 90° position

D-3/4"      B - 270° position

E-1"

### Header Size, Type, Side

Size      Type      Inlet Side

C-1/2"      N - NPT(M)      R - Right

D-3/4"      P - ProPress®      L - Left

E-1"      T - Tube

F-1.25"

G-1.5"

H-2"

I-2.5"

J-3"

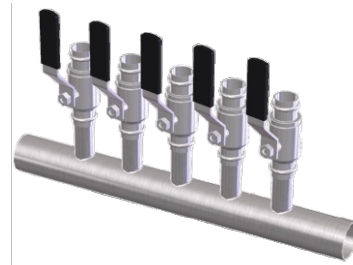
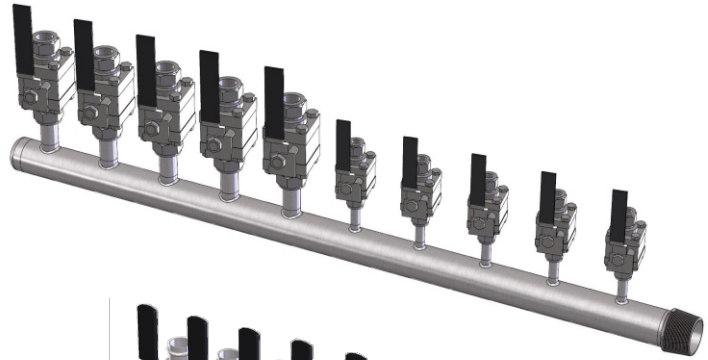
L-4"

### Series Type

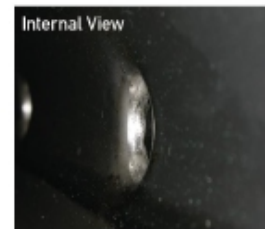
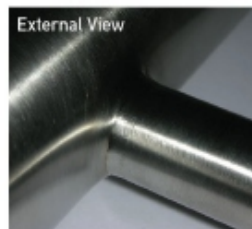
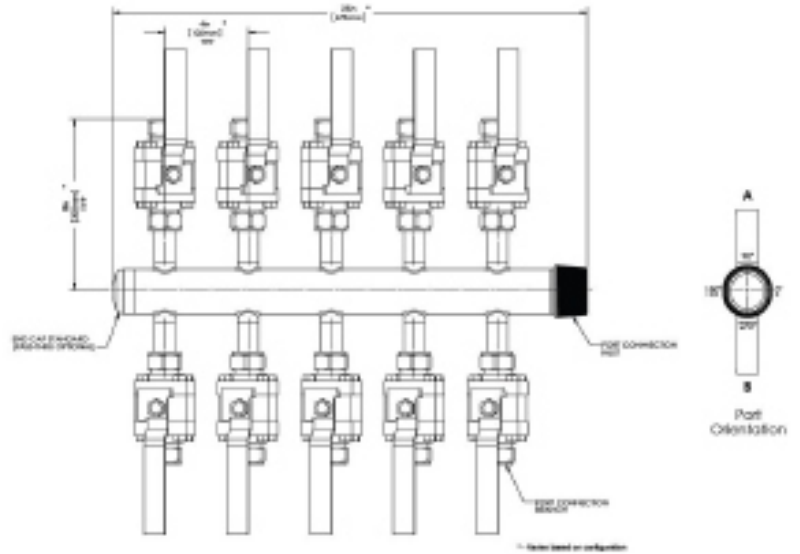
PH304 - Type 304 SS

PH316 - Type 316 SS

## PH Series Stainless Utility Manifold



## Dimensions



**Note** Product availability and specifications contained herein are subject to change without notice. Consult factory for potential revisions.



**DFS** Diversified Fluid Solutions  
A Critical Process Systems Group Company

11789 W. Executive Drive  
Boise, Idaho 83713  
P: +1 208.489.0053  
Web: [www.dfsolution.com](http://www.dfsolution.com)  
Email: [info@dfsolution.com](mailto:info@dfsolution.com)