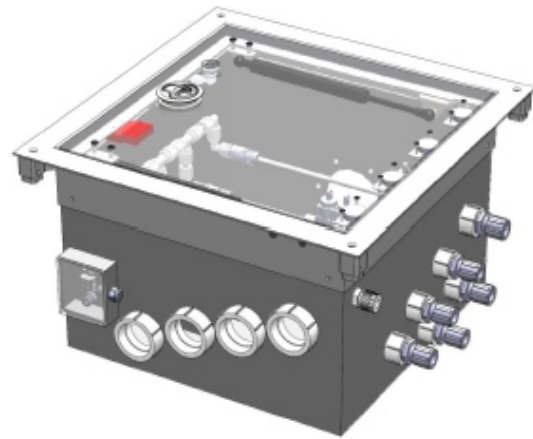


# FM1 Series Chemical/Slurry Floor Module Hook-Up



## Features

- ▶ Fully customizable enclosure.
- ▶ Constructed of commercially available chemical resistant materials.
- ▶ Bottom and/or side connections.
- ▶ Designed to easily replace RAF floor tiles.
- ▶ Frame in stainless steel or coated carbon steel.
- ▶ Many safety features available to meet customer and code requirements.
- ▶ Utilizes commercially available and custom components.
- ▶ NEHP Engineering Department available to configure floor box to meet requirements.

## Technical Data

### Frame:

Chemistry Dependent

### Box:

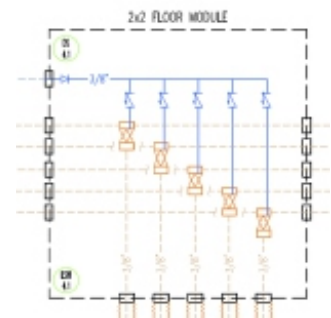
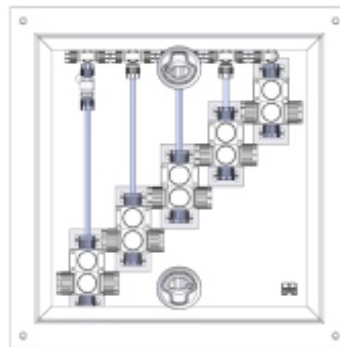
Chemistry Dependent

### Load Rating:

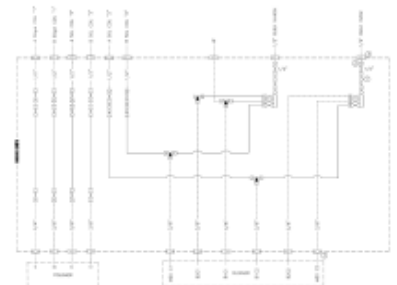
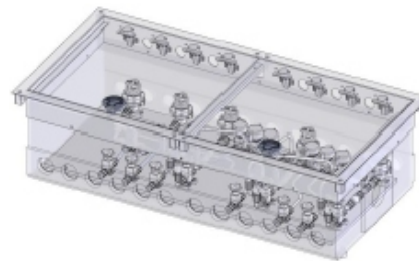
Up to 1000 lb Point Load

## Dimensions

Patent Number US 7,039,999 B2



## Example Chem Box



**Note** Product availability and specifications contained herein are subject to change without notice. Consult factory for potential revisions.



**DFS** Diversified Fluid Solutions  
A Critical Process Systems Group Company

11789 W. Executive Drive  
Boise, Idaho 83713  
P: +1 208.489.0053  
Web: [www.dfsolution.com](http://www.dfsolution.com)  
Email: [info@dfsolution.com](mailto:info@dfsolution.com)