

Features

- ▶ Fast and easy integration into pre-existing process.
- ▶ Fully customizable configurations based on customer supplied flow diagram.
- ▶ Integrated control systems available.
- ▶ Leak integrity testing prior to shipping.
- ▶ Reduce on-site cost, labor, and risk.

Technical Data

Type:

Carbon Steel (std), 304 SS optional

Finish:

Black Epoxy Enamel (std),
Color match available, mill or brushed
for stainless steel

Tube Material:

Process dependent

Tube Spec:

Process dependent

Size (Inlet/Outlet):

Process dependent

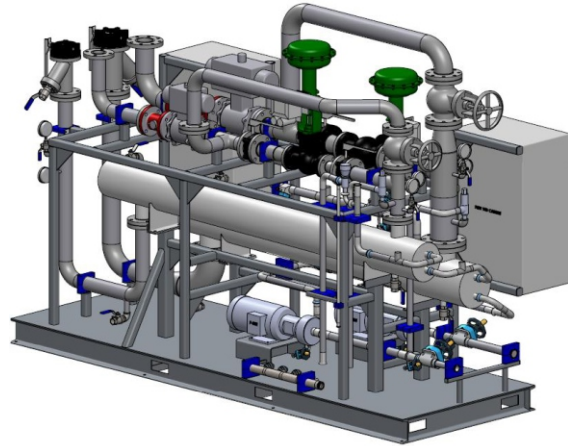
Ordering Information

Consult factory with details to discuss ordering information.

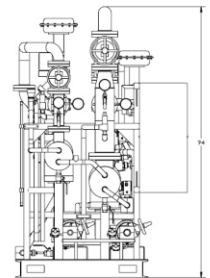
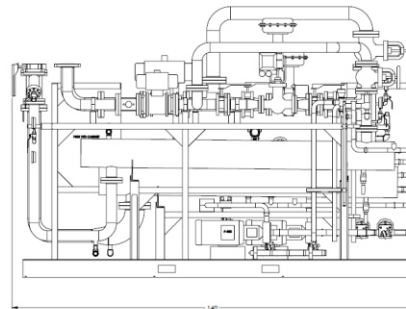
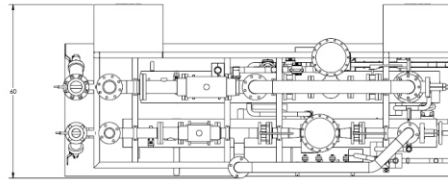
Note Product availability and specifications contained herein are subject to change without notice. Consult factory for potential revisions.

PCW1 Series

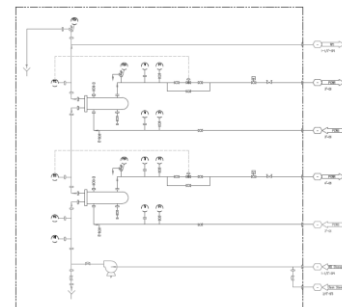
Process Water Temperature Control Skid



Dimensions



Example Flow Chart



DFS Diversified Fluid Solutions
A Critical Process Systems Group Company

11789 W. Executive Drive
Boise, Idaho 83713
P: +1 208.489.0053
Web: www.dfsolution.com
Email: info@dfsolution.com