

Features

- ▶ Fast and easy integration into pre-existing process.
- ▶ Fully customizable configurations based on customer supplied flow diagram.
- ▶ Integrated control systems available.
- ▶ Leak integrity testing prior to shipping.
- ▶ Reduce on-site cost, labor, and risk.

Technical Data

Type:

Carbon Steel (std), 304 SS optional

Finish:

Black Epoxy Enamel (std),
Color match available, mill or brushed
for stainless steel

Tube Material:

Process dependent

Tube Spec:

Process dependent

Size (Inlet/Outlet):

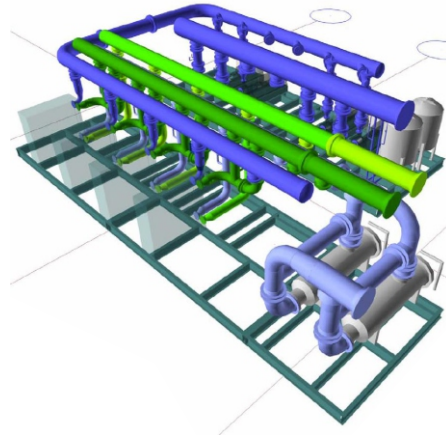
Process dependent

Ordering Information

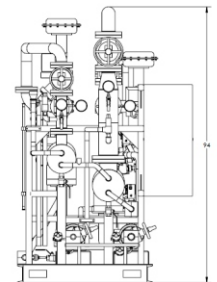
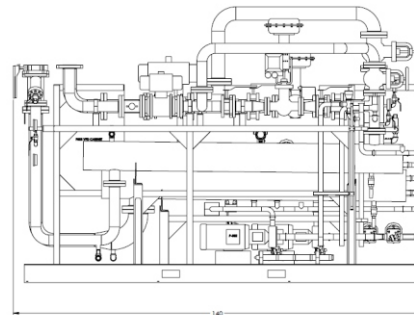
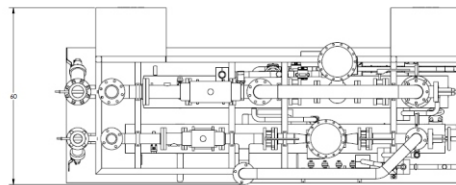
Consult factory with details to discuss ordering information.

PCW2 Series

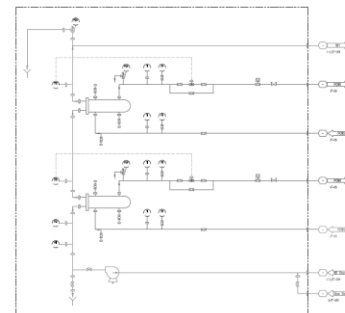
Utility Process Water Cooling Skid



Dimensions



Example Flow Chart



DFS Diversified Fluid Solutions
A Critical Process Systems Group Company

11789 W. Executive Drive
Boise, Idaho 83713
P: +1 208.489.0053
Web: www.dfsolution.com
Email: info@dfsolution.com

Note Product availability and specifications contained herein are subject to change without notice. Consult factory for potential revisions.